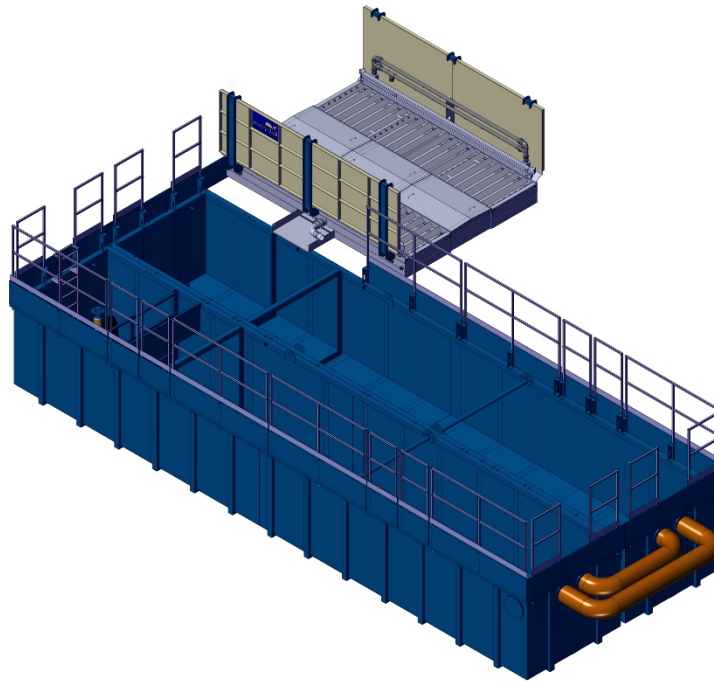


## MobyDick Conline KIT Plus 400 B-100P



### Specifications\*

|   |       |                     |
|---|-------|---------------------|
| Length of wash unit                               | 400   | cm                  |
| Clear drive through width of the wash unit (lane) | 280   | cm                  |
| Maximum axle load                                 | 15    | t                   |
| Height of splash protection side walls            | 136   | cm                  |
| Nozzles (Core diameter min. 7 mm)                 | 130   | Pcs.                |
| Nozzle bars per side                              | 2     | Pcs.                |
| Recycling tank volume                             | 100,0 | m <sup>3</sup>      |
| Usable volume of operating water                  | 70,0  | m <sup>3</sup>      |
| Sedimentation area of the recycling tank          | 51,0  | m <sup>2</sup>      |
| Discharge height of scraper conveyor above ground | -     | cm                  |
| Maximum pump performance                          | 5,0   | m <sup>3</sup> /min |
| Connected electrical load of the entire system    | 11,2  | kW                  |
| Sound emission                                    | < 75  | dB                  |

\*Rights reserved for technical changes